

DATA
SHEET

Sendmail Log
Management
Solution

Overview

The Sendmail Log Management Solution (SLMS) provides a consolidated, manageable method for generating detailed usage statistics about enterprise-wide email infrastructure via scheduled or on-demand reporting. SLMS enables companies to drill down into per-message, per-user and per-component forensics to quickly diagnose and, ultimately, prevent potential problems.



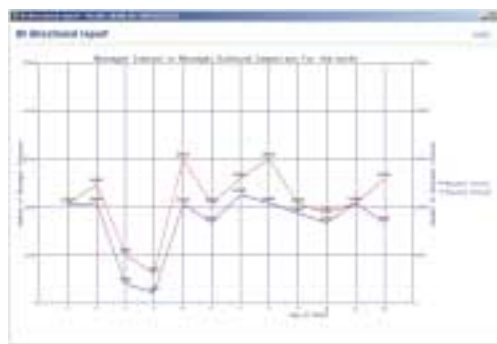
Provides complete visibility
into enterprise-wide email
infrastructure performance.

The Sendmail Advantage

The Sendmail Log Management Solution is part of the comprehensive Mailstream Manager suite of products from Sendmail designed to manage and protect the flow of email into and out of the enterprise.

Email has become one of the most critical communications tools for businesses today, and constant monitoring is essential to ensure the proper functioning of any large ISP or corporate email infrastructure. The Sendmail Log Management Solution helps businesses gain visibility into the health, performance and flow of email systems with a mechanism that consolidates, stores and analyzes log data from disparate email components, all in one place. Using this data, companies can monitor their email systems, plan for growth and help prevent bottlenecks in the flow of email into and within their enterprise.

Operating Systems: Solaris 7 or 8, Red Hat Linux
Advanced Server, SuSE SLES 7



The Sendmail Log Management Solution provides a complete view of the performance, health and flow of the email infrastructure, with configurable reporting from a single management interface.


SENDMAIL®
THE FULL POWER OF EMAIL

Features and Benefits of the Sendmail Log Management Solution

Proactively Manage System Performance – Sendmail Log Management Solution monitors the email system by domain, component, user, group or message size to quickly diagnose and prevent bottlenecks before they occur. SLMS provides the level of detail needed to fine-tune system performance and plan for growth.

Unify Mail System Reporting – the Sendmail Log Management Solution consolidates logs from disparate email components and provides a detailed view of overall system health from a single management interface. SLMS also provides robust reporting tools that turn log data into useful, easy-to-read charts, enabling a unified view of enterprise-wide email trends.

Identify Abuse or Threats to the Mail System – Sendmail Log Management Solution manages reporting on viruses, spam or individual user abuse of the mail system. For example, if IMAP inbound mailbox deliveries do not match MTA mail flow, it could indicate that MTAs are being used by spammers. Sendmail Log Management Solution can also be used to create and archive a corporate record of the mail flow for any given time to ensure regulatory compliance.

Control Costs – Sendmail Log Management Solution reports help allocate email usage costs across the organization, supporting departmental charge backs, or even subscriber usage billing.

Archive Data for Forensic Analysis – Sendmail Log Management Solution facilitates the archiving and restoring of log data based on configurable parameters (like data age) for redundancy or to save for future analysis.



For additional information on Sendmail Log Management Solution, other products or professional services, please contact us.



Sendmail, Inc.
6425 Christie Avenue, 4th Floor
Emeryville, CA 94608

1-87-SENDMAIL (877-363-6245)
+1 510 594 5400
sales@sendmail.com
www.sendmail.com

©2002 Sendmail, Inc. All rights reserved. Sendmail and the Sendmail logo are trademarks of Sendmail, Inc. Other trademarks, service marks and trade names belong to their respective companies. Information and specifications may change without notice.